

WHERE ON EARTH ?

Fig.23 Satellite photograph of the Earth

Geographers study people and places by using all sorts of **maps**.

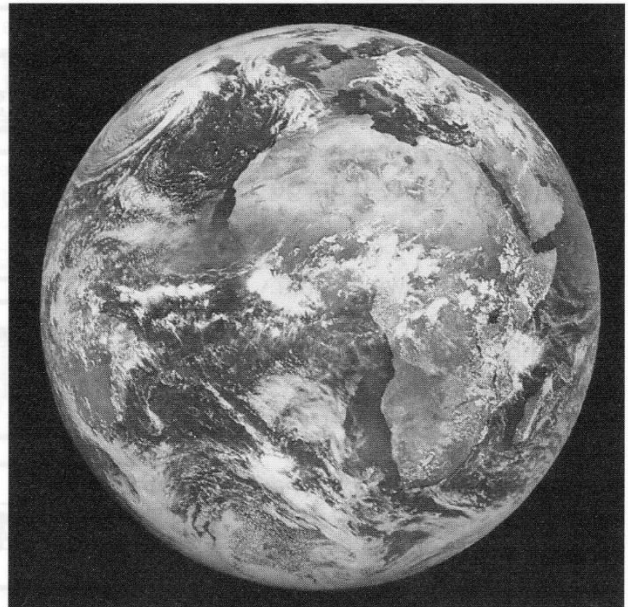
A map is a bird's eye view of an area, showing the shape and pattern of features within that area.

Sometimes the area shown on a map is small - like a map of a street or school playing fields. Maps of very small areas are often known as **plans**.

Other maps show large areas - like the map of the world shown below (figure 24) or the map of the British Isles (figure 26). These maps show where places are on the Earth.

The map below shows more than the photograph (fig.23). All of the world cannot be shown in one photograph. The world is round and part of it is out of sight from space.

A globe gives us the best map view of the Earth but it can sometimes be difficult to handle.



The map below shows the whole world spread out flat on a piece of paper. An **atlas** is a book of maps, full of information about all parts of the world.

MAP OF THE WORLD

Fig.24

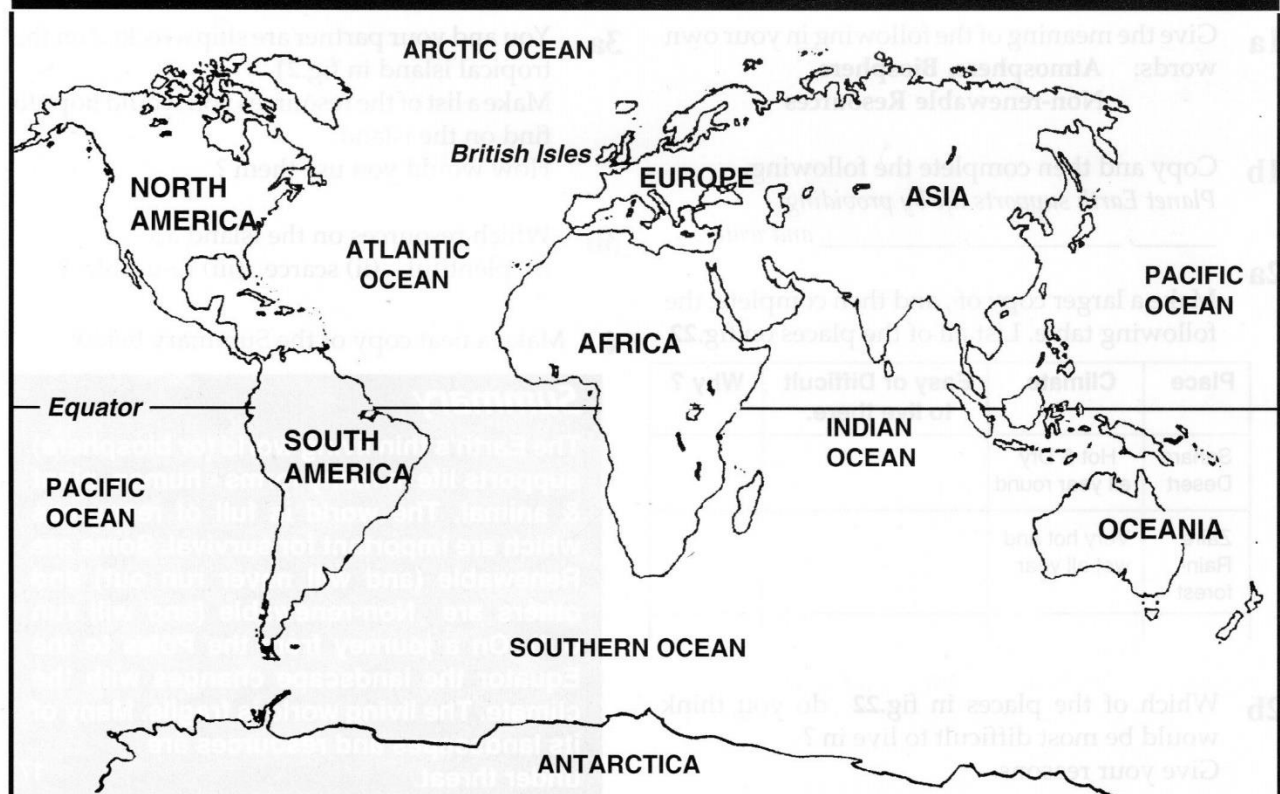


Fig.25 Satellite photograph of the British Isles

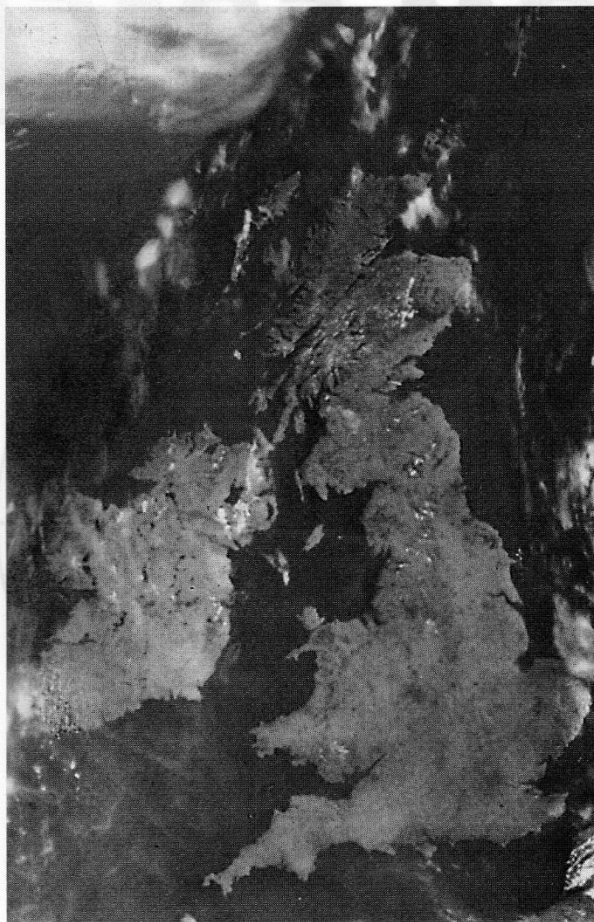
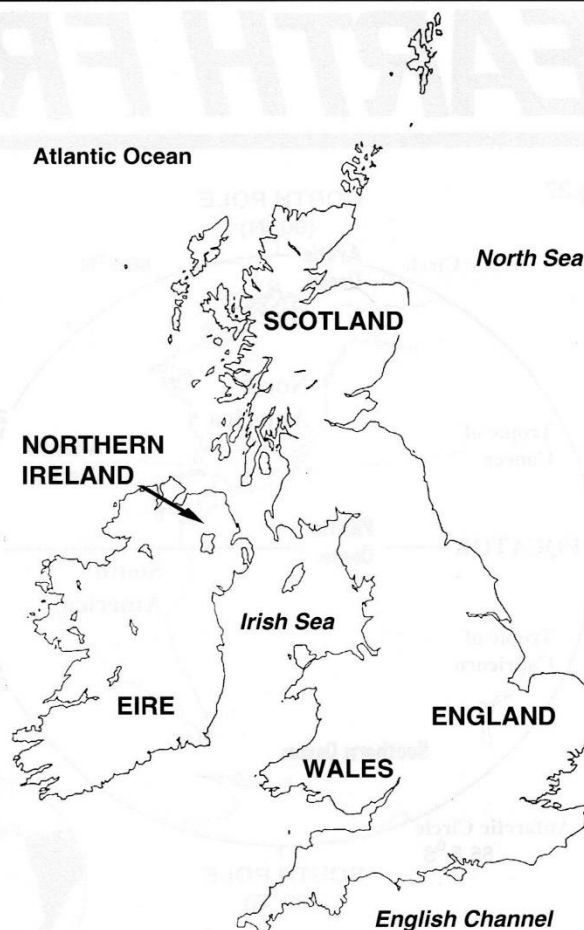


Fig.26 Map of the British Isles



The photograph (fig.25) and the map (fig.26) both show the British Isles. Five countries make up the **British Isles** - Scotland, Wales, England, Eire and Northern Ireland.

The **United Kingdom** (the **U.K.**) is made up of four countries - Scotland, Wales, England and Northern Ireland. Eire (or the Republic of Ireland) is a separate country.

Where on Earth ?

Tasks

- 1 What is a map ?
- 2 What is a book of maps known as ?
- 3 Name two things that are shown on photographs above that are not shown on maps.
- 4 Copy and complete the following sentences -
 - i. The largest areas of land are known as (countries/continents/places).
 - ii. Large areas of water are known as (continents/seas/oceans).
 - iii. The Atlantic Ocean lies between Europe and (Asia/North America/Oceania).
 - iv. Oceania is a continent made up of (Australia/India/Australia & New Zealand).
 - v. The United Kingdom has (4/5) countries - (Scotland/Wales/England/Eire/N. Ireland).
- 5 Look at both photographs (fig.23 and fig.25) then copy and complete the following sentences -
 - i. Figure 23 shows the continents of _____.
 - ii. The largest island on fig.25 is made up of the following countries _____.
- 6 On a blank map of the British Isles
 - i. Write the names of the five **countries**.
 - ii. Shade in and name the main **sea** areas
 - iii. Name the following **islands** on your map - Shetland, Orkney, Outer Hebrides, Arran, Isle of Man, Isle of Wight, The Scilly Isles.
- 7 Write a summary of a couple of sentences on maps and atlases.

The easiest way to find a place in an atlas is to look it up in the **Index** at the back of an atlas.

The **Index** lists all of the places in the atlas in **Alphabetical order**.

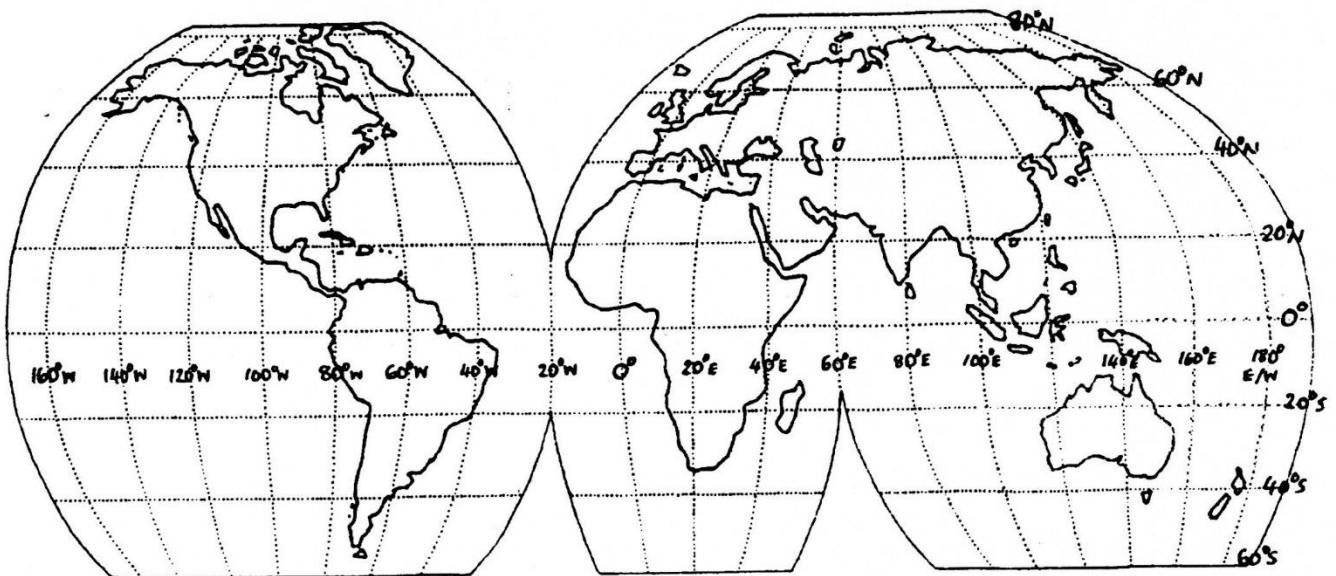
1. Find the following places in the index of your atlas - London Drumnadrochit Moscow.
2. For Drumnadrochit, you will find the following information :-

Place	Region/Country	Page	Latitude	Longitude
Drumnadrochit	Highland Scotland		57 20N	4 30W

3. Use this information to find **Drumnadrochit** in the atlas.
4. Fill in the following **table** by using the index of the atlas.

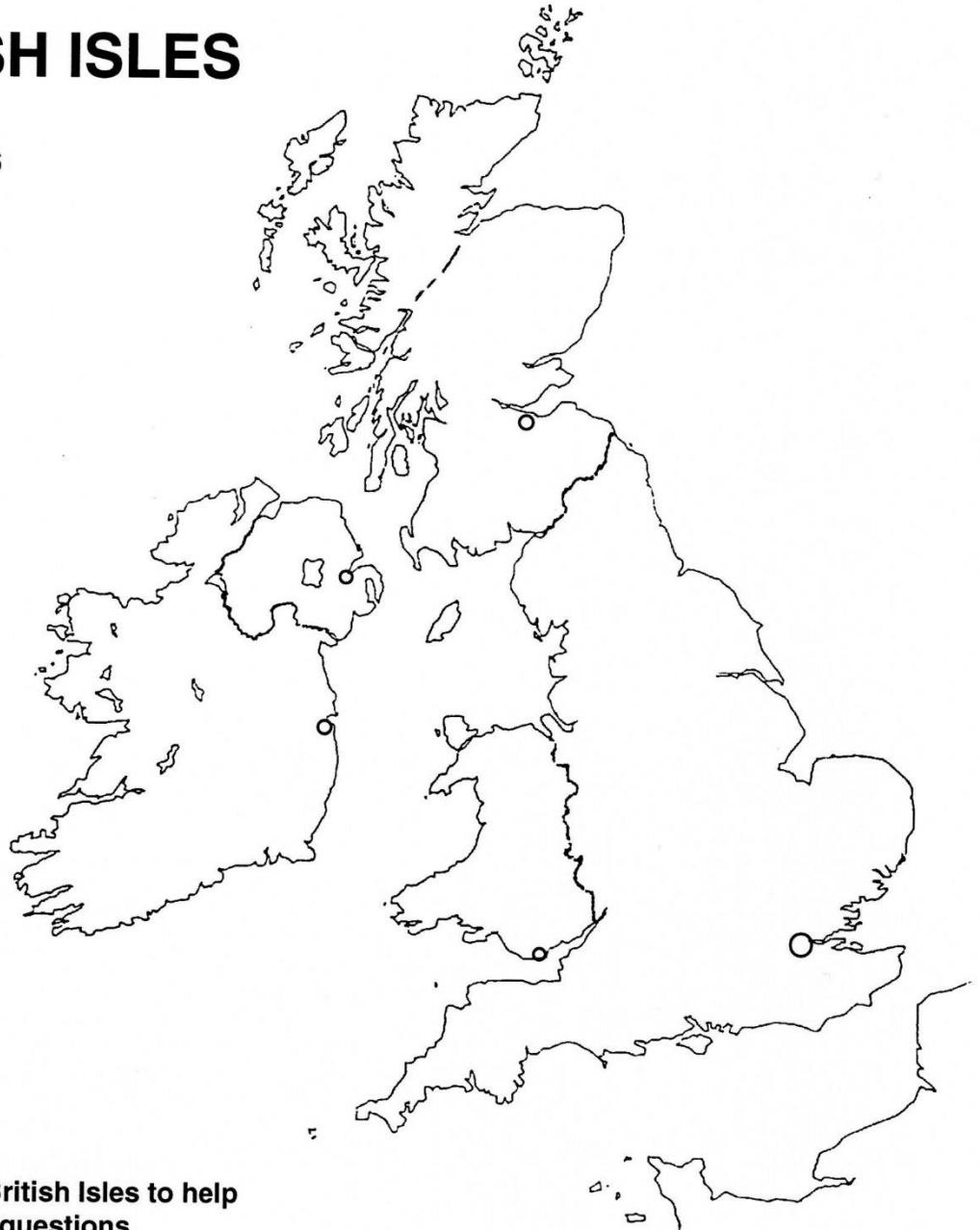
Place	Region/Country	Page	Latitude	Longitude
Everest, Mt.				
Mallorca, I.				
Horn, C.				
Eyre, L.				
Tokyo				
Amazon, R.				
Palk, Str.				
New York				
Hawaiian, Is.				

5. What do the following **abbreviations** mean ? Mt. _____ I. _____
C. _____ L. _____ R. _____ Str. _____ Is. _____
6. Mark the above places on the world map below using their **latitude and longitude**.



THE BRITISH ISLES

Look at figures 25 and 26



Use an Atlas map of the British Isles to help you answer the following questions.

1. Write the names of the **countries** of the British Isles on the map in the correct places.
Choose from : **Scotland Wales England Northern Ireland Eire (Republic of Ireland)**
2. Each country has its own **capital city**. The capital cities are shown on the map with a ○ .
Write the names of the capital cities in the correct place on the map above.
Choose from : **Edinburgh Cardiff Belfast London Dublin**
3. The British Isles are islands surrounded by seas. Copy the names of the main **seas** around the British Isles from the map shown in figure 26
4. Which other countries are shown on the map above ?
 - i. _____
 - ii. _____
5. **Shade** in your map neatly.

An **atlas map** of the world is spread out on a flat piece of paper - like the one below.

Answer the following questions using an atlas to help you.

THE WORLD - CONTINENTS AND OCEANS



1. Write the names of the **Continents** on the above world map - **choose from**
Africa Oceania North America Antarctica South America Europe Asia
2. Write the names of the **Oceans** on the above world map - **choose from**
Atlantic Ocean Pacific Ocean Indian Ocean Southern Ocean Arctic Ocean

Study the map of the **British Isles** alongside.

3. Draw the **borders** of all five countries on the map of the British Isles.
4. Write the names of all **five countries** of the British Isles on the map.
5. Write the names of the following **sea areas** on the map of the British Isles - **choose from** -
North Sea English Channel Irish Sea
Atlantic Ocean Bristol Channel
6. Fill in the table below listing the **capitals** of the countries in the British Isles.

Country	Capital City
Scotland	
England	
Northern Ireland	
Wales	
Eire	

THE BRITISH ISLES

